



# WADI LAHAMI

THE ECO-DIVING ADVENTURE • SINCE 1990



## ABOUT RED SEA DIVING SAFARI

Red Sea Diving Safari offers the southern Red Sea's leading nature-based tourism and diving experience. We operate 3 unique lodges which have been developed with an eco-friendly vision, each with their own natural charm and intimate setting.

### HIGH SEASON:

March, April, May,  
September, October,  
November

### LOW SEASON:

December, January,  
February, June, July,  
August

## WADI LAHAMI

- 393 km South of Hurghada Airport (6 hours)
- 180km South of Marsa Alam Airport (2.5 hours)

Transfers are available from nearby airports (Marsa Alam, Hurghada, Luxor) and landmarks.

Check-in time: 14:00hrs

Check-out time: 12:00hrs

Late checkout until 2pm is free of charge according to availability. Day-use (until sunset) will be billed at half day price and according to availability.

Upon arrival, guests with any prepaid services should present their voucher indicating the services that have already been paid for. Cash in Euros (€) is recommended for settling payment on site. Visa & Mastercard transactions incur a 3% bank fee and are charged in USD (\$).

## FACILITIES & SERVICES

- Internet: Please ask in reception for details
- Safe box at the reception free of charge

## ACTIVITIES

- SCUBA Diving
- Snorkeling
- Kite Surfing
- Yellow Penguin Bar
- Bird Watching
- Desert Excursions

## BOARD BASIS

Three meals per day, served in our open-air restaurant are included as part of the soft all inclusive package. Guests will be served plated meals when occupancy is below 20 guests. Above 20 guests a buffet meal service will be offered. Soft drinks (cola, fanta, sprite in bottles), tea, Nescafe are also included. Outside restaurant opening times, snacks are available at charge from the cafeteria. Please inform the reception of any special dietary requirements.

## MINERAL WATER

In Wadi Lahami we operate a water dispenser scheme to reduce our plastic waste. Each guest will be given one mineral water bottle free of charge which can be refilled from our water dispensers. We invite guests to purchase an RSDS cooler bottle to refill. Additional bottles of mineral water will be charged for.

## KITE STATION & YELLOW PENGUIN BAR

See more information about our Kite station and kite surfing map on page 7.



As part of our sustainable tourism vision we believe in the importance of protecting our natural resources. We expect our guests to follow our environmental regulations and local laws. Information about these rules is provided in each room and as part of the welcome briefing.

**TO READ ABOUT OUR ECO EFFORTS VISIT:**  
[www.redsea-divingsafari.com/eco-efforts](http://www.redsea-divingsafari.com/eco-efforts)



## ACCOMMODATION

### TENT (20)

- 3,5 m x 3.5 m/ 4 m x 4 m
- Hand-made furniture
- Lighting
- Electricity plugs
- Outside seating
- Daily housekeeping
- Fan
- Two single beds
- Maximum occupancy: 2
- Communal bathroom facility (shower gel & handwash provided)

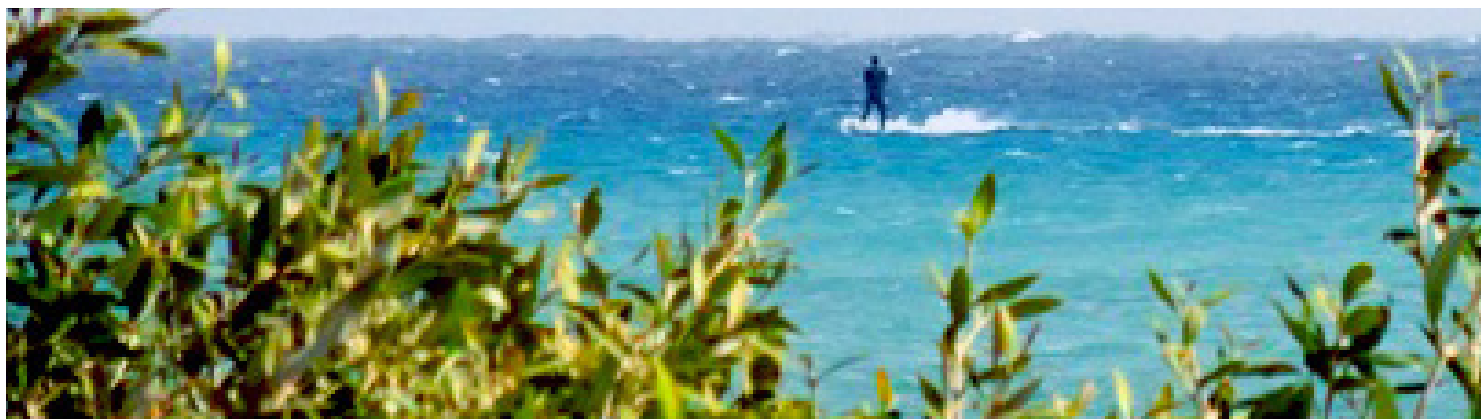
### ROYAL TENT (11)

- 5m x 5m
- Hand-made furniture
- Lighting
- Electricity plugs
- Beanbag seating area
- Outside seating
- Daily housekeeping
- Mini Fridge
- Fan
- Guaranteed sea view (sunrise view)
- Two single beds or one king bed
- Maximum occupancy: 4 (ideal for families)
- Communal bathroom facility (shower gel & handwash provided)

### CHALET (16)

- 8m x 5m
- Two single beds
- Wardrobe
- Side tables and dressing table
- Fan
- Outside seating
- Daily housekeeping
- Two terraces - one with mountain view, one with sea view
- En-suite bathroom

**Guests should bring their own towels for showering (unless staying in a chalet) and beach towels, and cosmetics; shampoo, shower gel, toothpaste etc. We sell a limited selection of Nefetari natural body-care products.**



## DIVING CENTER

PADI Resort #: 35829

CDWS Center #: RSDC 67

PADI Courses: Discover Scuba Diving to Assistant instructor\*

PADI Courses for Kids: Bubblemaker, Seal Team, JOW, JAOW, Junior Rescue Diver.

PADI Courses for Non Divers: E.F.R instructor



## LOCAL & INTERNATIONAL DIVING AND ENVIRONMENTAL REGULATIONS

Red Sea Diving Safari is a PADI Diving Center, member of the Egyptian Chamber of Diving and Watersports (CDWS) and the Red Sea Diving Association. Wadi Lahami is also a member of HEPCA (Hurghada Environmental Protection and Conservation Association). Our organisation adheres to ISO standards and we enforce strict rules to ensure guest safety and environmental protection. Red Sea Diving Safari reserves the right to restrict any person from diving or accessing certain dive sites according to their qualification level and skills, or as evaluated during their orientation dive, or further dives on site.

All divers must dive within their certification limits, including:

- Night dives may only be undertaken by those who have completed the PADI Advanced Open Water course or PADI Adventure Night Dive, or equivalent, or who take a private guide from the RSDS team.

- Nitrox may only be used by those holding the PADI Enriched Air Nitrox certification or equivalent.

- All diving must be complete in buddy pairs.

- Only divers holding CMAS 3\*, PADI Deep Diver specialty, or CMAS 2\* divers under direct supervision of an instructor are permitted to dive past 30m. Technical divers are also permitted.

- Divers who have not dived within the last 6 months will be required to undertake a PADI Scuba Review.

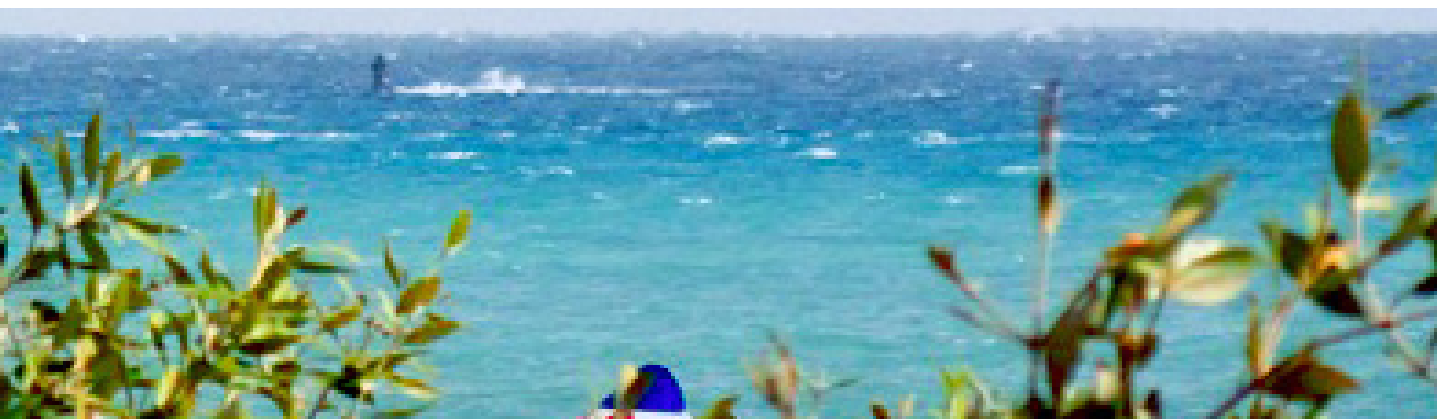
- Divers holding the PADI Self Reliant distinctive specialty or equivalent may dive solo at Torfa (Wadi Lahami house reef).

Please also note:

- Alternate air source (octopus, or air2), SMB and diving computer are compulsory for all divers.
- Guests with their own equipment should bring thick soled booties, essential for shore based diving.

## SNORKEL & FREEDIVING

Snorkeling and Free Diving is possible at many of the Wadi Lahami dive sites due to the sheltered conditions. Guests are requested to enquire in the diving centre regarding suitability of different sites for snorkelers and free divers.





## DIVING CENTER FACILITIES

Full diving equipment is available for rental on site and is included free of charge for the participants of the Open Water Course. Please inform us in advance of equipment required and approximate sizes.

- 12l aluminum tanks with single valve, DIN or international, are available and stored in the compressor room. A sufficient supply of full tanks is always loaded onto the zodiac. 15l tanks are available on request (additional charges apply).
- Nitrox enriched air cylinders (EAN up to 32%) are available to certified Nitrox divers. Please inform us in advance if you wish to dive with Nitrox. The PADI Enriched Air Diver Course is also offered upon request.

The diving shade is an area on the beach where guests store equipment and prepare for diving. It has the following facilities:

- Lockers for equipment storage (one per guest)
- Outdoor showers
- Hangers for wetsuits and booties
- Rinse pools for all equipment
- Water dispensers
- White boards for dive briefings
- Marine life sightings board

Guests are fully responsible for their own equipment and rental equipment when stored in the Diving Shade. Equipment should be locked away securely.

## DIVER HEALTH & SAFETY

A doctor is available 24/7 at our hyperbaric medical center, Baromedical, in case of emergencies. All divers will be charged €7 per stay for decompression treatment support (covering 1 chamber treatment within 2 weeks of their arrival date. Further treatment is chargeable and hospitalisation or emergency transportation is not covered. The doctors at Baromedical can also treat a variety of other issues and are available for consultation if a diver answers 'Yes' to any questions on the PADI liability form.

Dehydration is the number one cause of stomach ache/sickness. Keeping hydrated is easy to avoid by drinking less alcohol and caffeinated beverages, and increasing water intake. Consumption of any alcoholic beverages before diving is strictly prohibited.

## LANGUAGES

In general, English language will be used when giving instruction or dive briefings. The Wadi Lahami team also have extensive language skills including French, German and Arabic and PADI materials can be provided in other languages with advanced notice.



## DIVING PROGRAM

Wadi Lahami is situated on a natural bay with sandy bottom, with a fringing reef called Torfa, accessible by short zodiac ride. Confined water dives and night dives are usually carried out at Torfa.

The diving program includes tanks, weights and 4 dives per day by zodiac, according to the following schedule:

**Morning:** Depart early morning for 2 dives. Weather conditions permitting, these dives will be made at the Fury Shoals reefs (zones 2 & 3). A surface interval will be made on the zodiac in a location away from waves with light refreshments (tea/coffee & cake). Guests return to Wadi Lahami in time for lunch.

**Afternoon:** Guests are briefed for 1 unguided dive by zodiac at a dive site closer to Wadi Lahami (zone 1).  
**Evening:** Guests are briefed for 1 unguided night dive at Torfa (Zone 1).

Dive sites are subject to change according to the weather conditions, diver certification or experience, or other conditions as determined by the base leader. Wadi Lahami is suitable for any level diver, including new divers (sites are chosen according to diver experience). Divers should be fit and prepared for zodiac diving.

Guests generally undertake a weight check at the beginning of their first dive on their first diving day. Additional weights will be carried on the speedboat in case they are needed.

Over 30 different dive sites are accessible from Wadi Lahami, split into zones. Zones 1 and 2 are included in the package, while an additional charge of €20 applies to trips taken to Zone 3.

### DIVE SITES ARE SPLIT INTO ZONES AS FOLLOWS:

#### ZONE 1 Included NO min. pax

1. Torfa (house reef)
2. Ras Bonny
3. Habili Gazella
4. Habili Daisy\*
5. Shabrour\*

\*Night dives at Habili Daisy and Shabrour are available for a minimum no. of 4 pax and €10 per person supplement.

#### ZONE 2 Included NO min. pax

1. Lahami North
2. Lahami South
3. Habili Bells
4. Abu Galawa Big (Tug)
5. Abu Galawa Small (Yacht)
6. Habili Dominique
7. Shaab Iny
8. Shaab Mini
9. Shaab Bloemen
10. Shaab Claudia

#### ZONE 3 €20 supplement per dive Min. 4 pax

1. Shaab Maksour
2. Satayah (Dolphin Reef)
3. Malahi
4. Shaab Angel

The Fury Shoals reef system is one of the most pristine and beautiful reef systems in the world. Accessing these dive sites by zodiac from the shore offers the following advantages over a safari boat:

- Ability to change dive site according to conditions and number of other boats
- Ability to dive different dive profiles

- Ability to reach certain reefs where big boat mooring is not possible

Divers at Wadi Lahami will visit a range of different dive sites during 5 diving days and can still do up to 4 dives per day despite being shore-based.

Divers should consider bringing a small dry bag with windproof jacket, hat, suncream and other essentials for the surface interval.

# WADI LAHAMI

## KITE SURFING

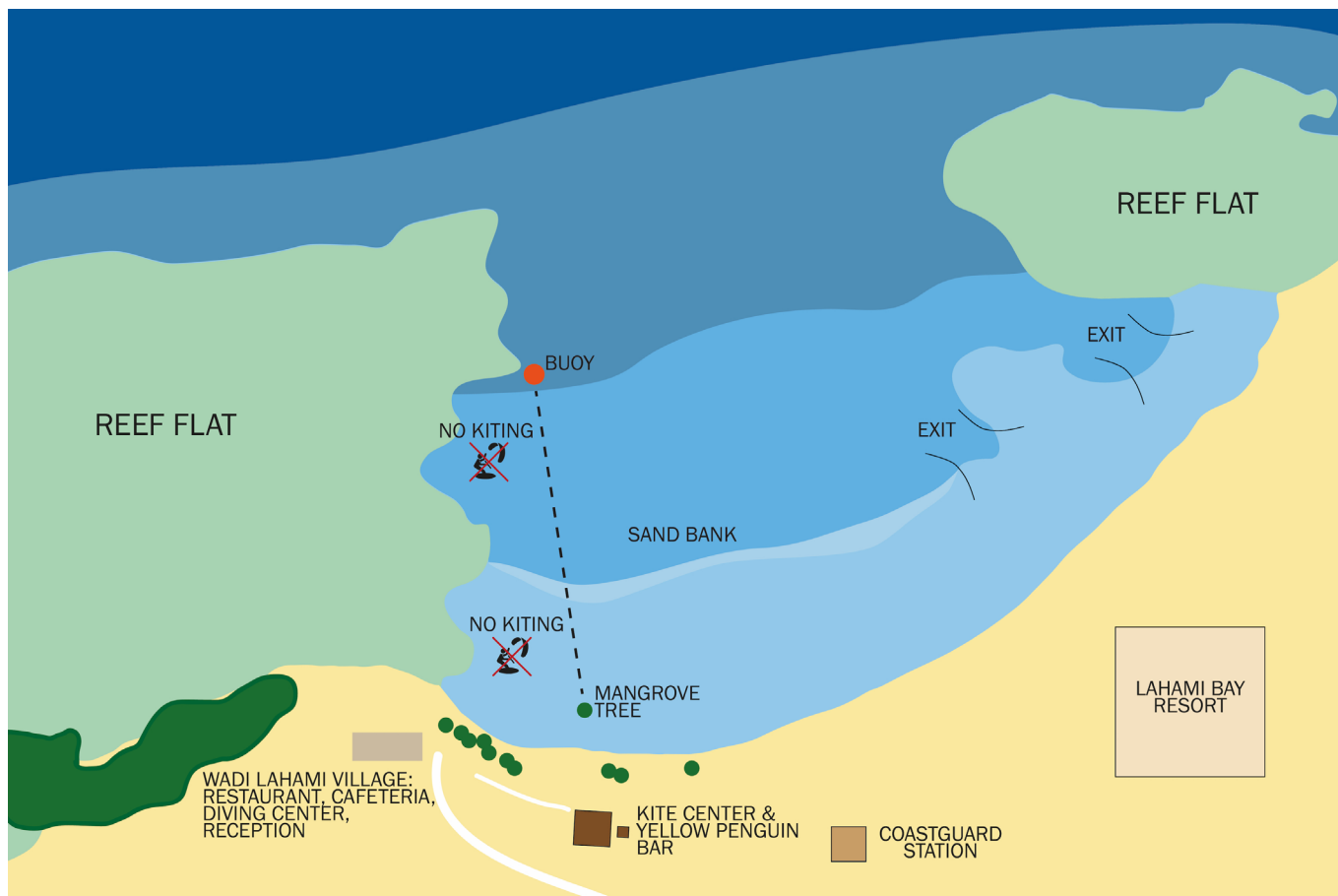


More and more kites and windsurfers are choosing the Southern Red Sea as their preferred destination with its constant wind and sandy lagoons making it ideal for all levels. While some of the more well-known spots have become overcrowded, Wadi Lahami Kitesurfing Center remains intimate and welcoming with no shortage of space on the water. The bay is large but quiet and private with a sandy bottomed lagoon directly in front of the beach, ideal for launching and landing kites at all levels.

Beginners will appreciate the ease of access into the protected lagoon, while experienced kites have the freedom to kite away from the bay where during the season you will find some very challenging waves.

Our Kite Station offers the following facilities:

- On site kiting instructor with courses offered from beginner to advanced
- Storage facilities for kites bringing their own equipment
- Zodiac rescue and supervision
- Equipment rental - please advise of items required when booking
- Shaded relaxation area with loungers
- Maximum 25 kites in the bay (usually a lot less!)
- Excursions to off-shore reefs and islands
- Combination packages for Diving and Kite Surfing (kite when there is wind, dive when there is not!)
- Yellow Penguin Bar on site offering beer, wine, soft drinks and a great, relaxed atmosphere.



# JOIN THE ECO-DIVING ADVENTURE.



## RED SEA DIVING SAFARI

Marsa Alam & Hamata, Egypt  
[info@redsea-divingsafari.com](mailto:info@redsea-divingsafari.com)  
T +2 02 3337 1833 / 3337 9942

[www.redsea-divingsafari.com](http://www.redsea-divingsafari.com)